

FROM THE ROYAL PARK TO THE NUMBER ONE RAJABHAT UNIVERSITY



The Royal Park

- ▣ The Royal Park is land that was originally used for the recreation, mostly hunting, of the royal family.



The Kensington Park in the U.K.



The Balmorals Garden in the U.K.



The Versailles Park in France



Civilization VS Barbarian

- ▣ **Civilization:** relatively high level of cultural and technological development; the culture characteristic of a particular time or place
- ▣ **Barbarian:** a person from an alien land, culture, or group believed to be inferior, uncivilized, or violent – used chiefly in historical references

Anna Leonowens: The King and I



Anna Leonowens Western Teacher in Siam



The Royal Park in Siam

- ▣ The royal park concept was adopted to Siam during the reign of King Rama the fifth in order to be recognized as a civilized country.

The Royal Park in Siam



The Royal Park in Siam



WHY DID SIAM HAVE TO CHANGE?

- ▣ The invasion and intrusion of European empires had forced Thailand (Siam at that time) to adjust ourselves following the western pattern.



The Adaptation of Royal Members



The Adaptation on Ways of Life



Female and Social Values

- ▶ Wife, virgin and prostitute (**England**)
- ▶ Mother and perfect housewife undertaking all household tasks – cooking, artistic skills of embroidery and handicrafts (Owata Kasattree – **Thailand**)
- ▶ Daughter, sister, wife, daughter-in-law, mother, and mother-in-law, according with the wishes and needs of closely-related men (**China**)

Thai Female and Expectations

- ▣ Expectations of family, relatives and circles
- ▣ Expectations of herself (influenced by society)
- ▣ Expectations of communities and society surrounded

Thai Female and Education during Ayutthaya Period

- ▣ Poetry writing / composition
- ▣ Arts and handicrafts
- ▣ Royal etiquette

Royal Etiquette



Royal Etiquette



Poetry Writing / Composition



Upper-class Female



Upper-class Female



Chinese Royal Court



玉少松金圖
辛卯月劉景文畫



二
三
四
五
六
七
八
九
十
十一
十二
十三
十四
十五
十六
十七
十八
十九
二十
二十一
二十二
二十三
二十四
二十五
二十六
二十七
二十八
二十九
三十



Japanese Royal Court



Japanese Royal Court



From the Royal Park to Royal Inner Court

- ▣ Originally, Suan Sunandha was once the royal garden in the precinct of Dusit Palace as a place for leisure of king Rama V and the royal family. The name "Uttayan Sunandha" or "Sunandha Royal Garden" was dubbed from name of Indra God's garden in the paradise, and is also the name of King Rama V's favorite and beloved queen - Queen Sunandha Kumareerattana.

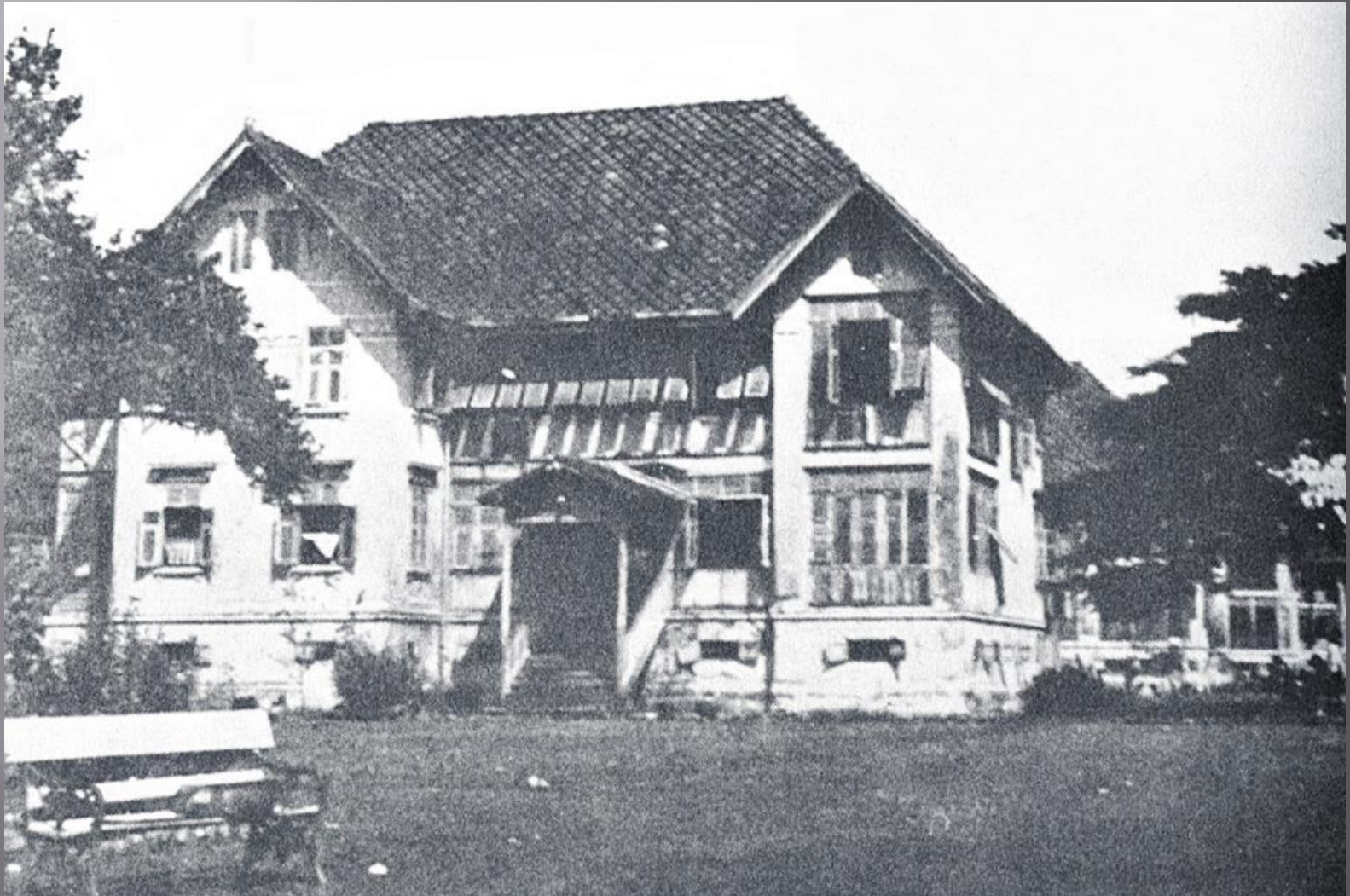
From the Royal Park to Royal Inner Court

- ▣ In the reign of King Rama VI, 32 buildings were built for being the residence of the royal consorts and concubines of King Rama V, including their courtiers.

H.H. Princess Saisavali Bhiromya Mansion



Royal Member House



Nibhakarn: the First Siamese Furnishing School

- ▣ H.H. Princess Saisavali Bhiromya, one of the Royal Consort, founded a lady school "Nibhakarn". aiming to train the royal etiquette and manner for the royal young ladies as well as the ladies from noble families.



Furnishing Schools

- ▶ Furnishing schools are schools that teach young individuals etiquette and good manners, in order to prepare them for the future and adult life. Traditionally, high-class and rich people used to send their daughters to these schools to prepare them for married life.

- ▣ A Furnishing School, a concept of a time gone by, once educated young women with the skills required to be considered attractive to affluent men.

- ▶ A furnishing school is a school for young women that focuses on teaching social graces and upper-class cultural rites as a preparation for entry into society. ... At their peak, thousands of wealthy young women were sent to the dozens of furnishing schools available. A primary goal was to teach students to acquire husbands.



Nibhakarn School Objective

- ▣ To provide basic education for female royal members and nobles' daughters / nieces as a boarding school.

What did they learn?



Western Dining Manner



Royal Thai Cooking and Carving



Royal Thai Cooking



Royal Thai Cooking



Royal Thai Cooking



Flower Hanging, Garland and Perfume Making



Embroidery



Water Color Paintings



Music



Classical Dance



Sports



From Nibhakarn to Sunandha Wittayalai School

- ▣ The Siamese Coup d'état of 1932 had made a big impact towards the Royal households. A lot of royal members and courtiers resided in Suan Sunandha felt unsecure about the situation, consequently, they left the place. The beauty and splendid of Suan Sunandha, including Nibhakarn School were no longer existed.

- ▣ It was until the reign of King Rama VIII, the once-decayed Suan Sunandha was back to life. The cabinet had made a consensus to make use of Suan Sunandha space as a lady school named "Sunandha Wittayalai School", transforming the royal inner court to a national education institution, and having been developed and upgraded to Suan Sunandha Rajabhat University right now.





Timelines of Development

- ▣ 1937: Sunandha Wittayalai School
- ▣ 1975: Suan Sunandha Teachers College
- ▣ 1983: Rajabhat Institute Suan Sunandha
- ▣ 2004: Suan Sunandha Rajabhat University



Facts about SSRU Emblem

- ▣ "Blue" = signifies the monarchy
- ▣ "Green" = signifies the location of 39 Rajabhat Universities scattering throughout the country in the natural environment.
- ▣ "Orange" = signifies the glory of local arts and culture.
- ▣ "Gold" = signifies the glorious wisdom
- ▣ "White" = signifies the purity in thought of the wise men of the King.

Suan Sunandha Rajabhat University: the Number 1 Rajabhat University

- ▣ The Webometric of Spain ranked the world universities annually 2 times and Suan Sunandha Rajabhat University has been ranked the number 1 among Rajabhat University group for 16 times consecutively.

